

# Model PSB

## PRECISION SHEARBEAM LOAD CELL



The PSB is a robust high accuracy shearbeam load cell, available in capacities from 250kg to 10t in tool steel electroless nickel plated and 250kg to 5t in stainless steel.

A very popular Australasian shearbeam where it has become the industry standard and the major OEM quality scale makers load cell of choice.

Sealed to IP67 it is a perfect cell for platform scales, hopper, silo, bin weighing and high capacity axle weighing where a harsh environment demands a well specified rugged shearbeam.

A full range of mounting accessories including purpose built mounting kits with inbuilt swivel bearings.

## APPLICATIONS

- Floor scales
- Hopper, silo & bin weighing
- Hopper scales & net weighing scales

## FEATURES

- Robust tool steel or stainless steel construction
- Fully encapsulated
- Australasian industry standard
- Capacities from 250kg ~ 10t
- Matched mV/V and impedance

## Specifications

Note: All specifications are a maximum, as a % ( $\pm$ ) of full load, unless otherwise stated.

Nominal Capacity	250kg ~ 10t	Ultimate Load	300% of Rated Capacity
Signal Output at Capacity	2mV/V $\pm$ 0.1%	Input Resistance	410 $\Omega$ Nominal
Linearity Error	< 0.017% FSO	Output Resistance	352.2 $\Omega$ Matched $\pm$ 0.2 $\Omega$
Non-Repeatability	< 0.010% FSO	Insulation Resistance (bridge to ground)	> 5000 M $\Omega$ at 100V DC
Combined Error	< 0.023% FSO	Excitation Voltage (Recommended)	5 ~ 15V AC/DC
Hysteresis	< 0.010% FSO	Excitation Voltage (Maximum)	18V AC/DC
Creep/Zero Return (30 mins)	< 0.023% / 0.017% FSO	Storage Temperature Range	-50 ~ 70°C
Zero Balance	< 1.000% Capacity	Cable Type	5.5mm, Screened, PVC Sheath 6 Core x 0.24mm <sup>2</sup> (24 AWG)
Temperature Effect on Span/10°C	< 0.010 % FSO	Cable Length	3 Metres (250kg ~ 1t) 5 Metres (2.5t ~ 10t)
Temperature Effect on Zero/10°C	< 0.015% Capacity	Material	Alloy Tool Steel
Compensated Temperature Range	-10 ~ 50°C	Finish	Electroless Nickel Plated
Operating Temperature Range	-30 ~ 70°C		
Service Load	100% of Rated Capacity		
Safe Load	150% of Rated Capacity		



Manufactured in New Zealand

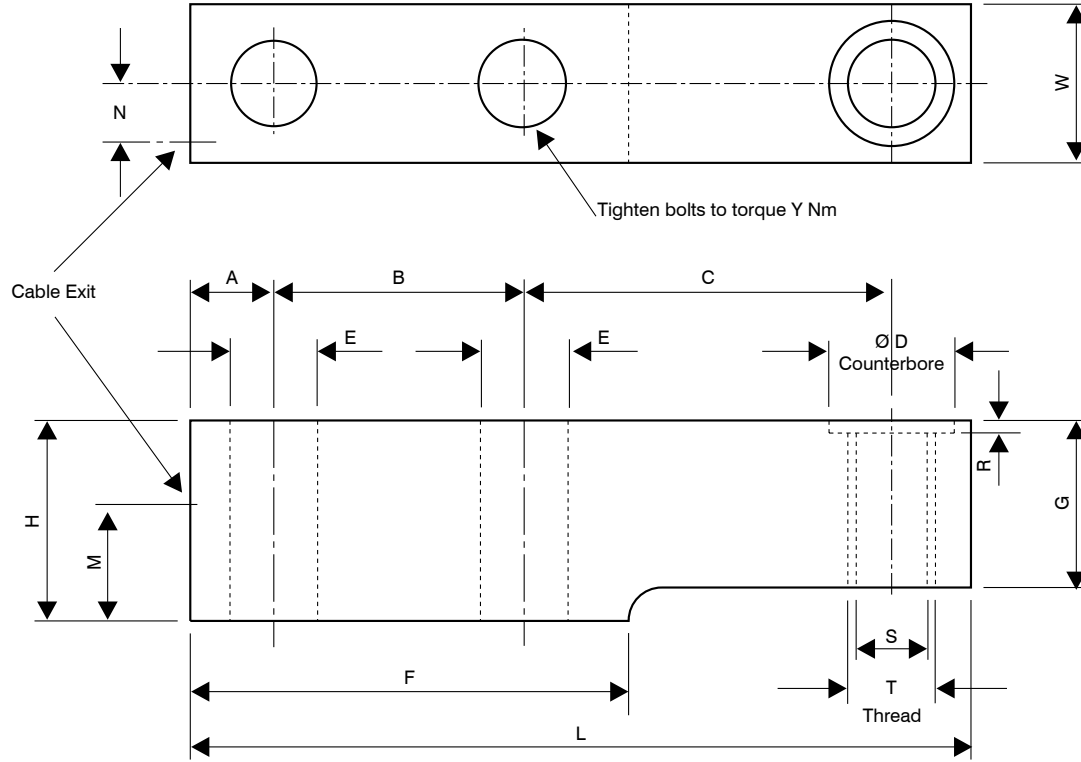
PT Limited®

<http://www.pt-global.com>

# Ordering Information

A full range of optional accessories is available, please contact us for further details. Detailed dimension drawings for the accessories are available at our web site.

MODEL	Part Number	MODEL	Part Number	ACCESSORIES	Part Number	Part Number	Part Number	CABLE PACKS	Part Number
PSB-250kg	PBM0250T000XXX	Stainless Steel Options:			250kg ~ 1t	2.5t ~ 5t	10t	Junction box to indicator runs.	
PSB-500kg	PBM0500T000XXX	PSB-250kg-S	PBM0250S000XXX	Load Button	A-LBM12	A-LB30	A-LB40	Available by the metre.	
PSB-1t	PBM1000T000XXX	PSB-500kg-S	PBM0500S000XXX	Load Socket	A-LS20	A-LS30	A-LS40	10 Metres	A-6C5.5-0010
PSB-2.5t	PBM2500T000XXX	PSB-1t-S	PBM1000S000XXX	Rod End	A-REM12N	N/A	N/A	50 Metres	A-6C5.5-0050
PSB-5t	PBM5000T000XXX	PSB-2.5t-S	PBM2500S000XXX	Ball & Cup	A-BC20	A-BC40	A-BC40	100 Metres	A-6C5.5-0100
PSB-10t	PBM10TT000XXX	PSB-5t-S	PBM5000S000XXX	Swivel Foot	A-SFM12	N/A	N/A	Cable Joint Kit	A-CAB-JOINTSTD
				Mounting Set	M-PSB-1	M-PSB-5	M-PSB-10		



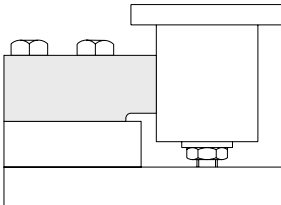
## Load Cell Dimensions

	A	B	C	D	E	F	G	H	L	M	N	R	S	T	W	Y	Weight
<b>250kg</b>	15	38	61.5	12	10.3	65	20	28.5	125	17	7.6	2	10.3	M12 x 1.75	26.5	45	0.65
<b>500kg</b>	15	38	61.5	12	10.3	65	26	28.5	125	14.25	7.6	2	10.3	M12 x 1.75	26.5	45	0.65
<b>1t</b>	15	38	61.5	12	10.3	65	26	28.5	125	14.25	7.6	2	10.3	M12 x 1.75	26.5	45	0.65
<b>2.5t</b>	20	60	88	30	20.25	105	40	48	187	28	14	3	21	none	40	365	2.20
<b>5t</b>	20	60	88	30	20.25	105	40	48	187	28	14	3	21	none	40	365	2.20
<b>10t</b>	24	60	117	40	26	120	58	68	225	39	17	5	26	none	48	815	4.35

Dimensions in mm    Weight in kg

## Accessories

### PSB & Mounting Set



### PT Cable Colour Code

Excitation	+ve	<span style="background-color: red; color: white; padding: 2px;">Red</span>
Sense	+ve	<span style="background-color: brown; color: white; padding: 2px;">Brown</span>
Excitation	-ve	<span style="background-color: black; color: white; padding: 2px;">Black</span>
Sense	-ve	<span style="background-color: blue; color: white; padding: 2px;">Blue</span>
Signal	+ve	<span style="background-color: green; color: white; padding: 2px;">Green</span>
Signal	-ve	<span style="background-color: white; border: 1px solid black; padding: 2px;">White</span>

