

WBK

Truck and tank Load Cell



● LOAD CELL



● FEATURES

- OIML C3 Approved (OIML R60)
- Built in lightning protection device
- Ex ia IICT6 Approved
- Protection Class IP68

● ACCESSORY OPTION

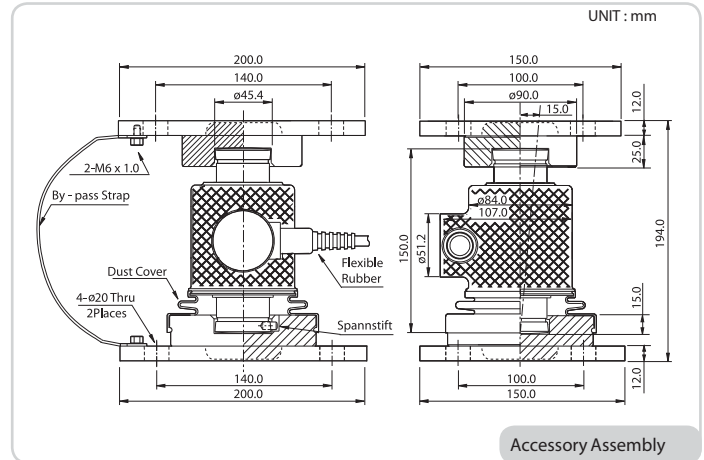
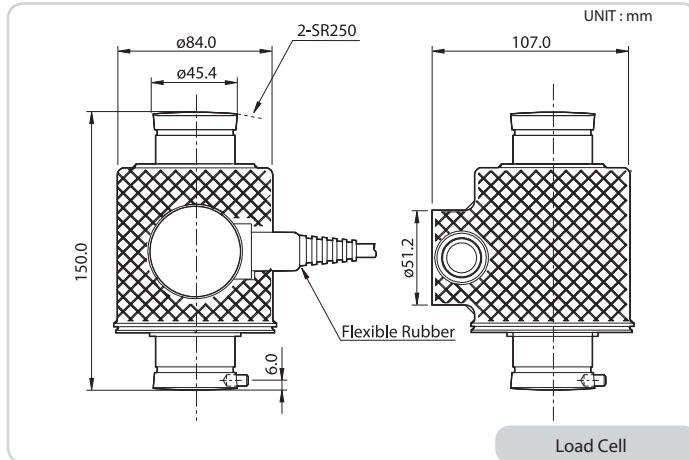
- Accessory set (TW)

● SPECIFICATION

Max. Capacity (Rated Load)	tf	10, 20, 25, 30, 50	
Rated Output	mV/V	2.0 ± 0.005	
Zero Balance	mV/V	0.0 ± 0.020	
Accuracy Class	-	D3	C3
Non-Linearity	%R.O.	0.03	0.02
Hysteresis	%R.O.	0.03	0.02
Combined Error	%R.O.	0.03	0.02
Repeatability	%R.O.	0.02	0.01
Creep for 30min.	%R.O.	0.03	0.017
Return for 30min.	%R.O.	0.03	0.017
Resolution	-	≤1/3000	≤1/5000
Division	mV/V	0.00067	0.0004
Temperature Effect on	-	-	-
Zero Value	%/10 °C	0.03	0.014
Output Value	%/10 °C	0.03	0.011
Excitation	-	-	
Recommended	V	10	
Maximum	V	15	
Resistance	-	-	
Input	Ω	350 ± 3.5	
Output	Ω	350 ± 3.5	
Insulation	MΩ	>2000	
Compensated Temperature Range	°C	-10 to +40	
Operating Temperature Range	°C	-40 to +70	
Material & Plate	-	Stainless steel, Buffing	
Cable Specification	-	ø8 x 4p x 10M, ø8 x 4p x 25M (PVC)	
	-	ø8 x 6p x 12M (Urethane)	
Safety Overload	%R.L.	150%R.L.	
Platform Size	mm	No Platform Type	



● DIMENSION

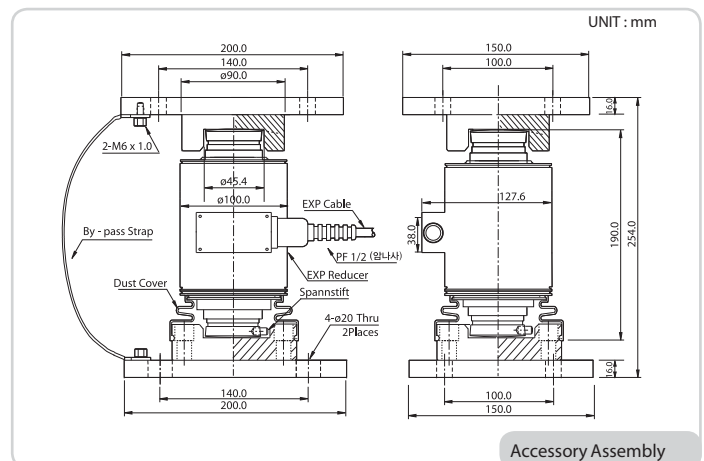
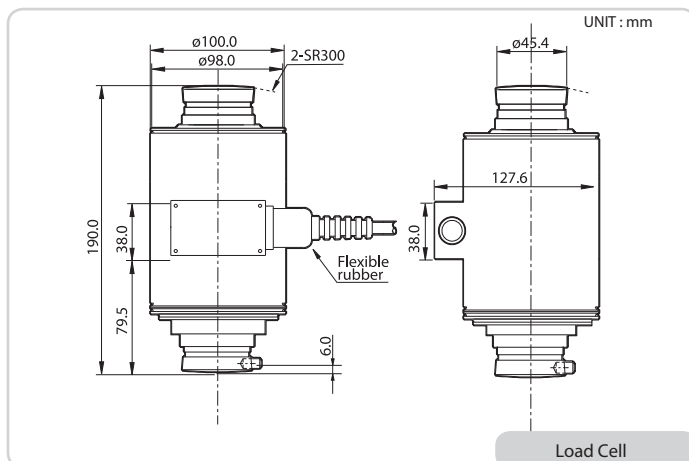


● ACCESSORY FEATURES

- Easy Load Cell replacement
- Appropriate for Tank and Truck application
- Loading, Mounting Bearing included
- Structurally Safe Design
- Anti Load cell rotation system
- Suitable for moisture environments
- Anti-lightening Strap constitution

● MANUAL

- Fix the Mounting plate on the surface
- Check the level of the Mounting Plate
- Join the Dust Cover with the Lower Bearing
- Place the Load Cell over the Lower Bearing
- Assemble the Loading Accessory Set with the Load Cell



● ACCESSORY FEATURES

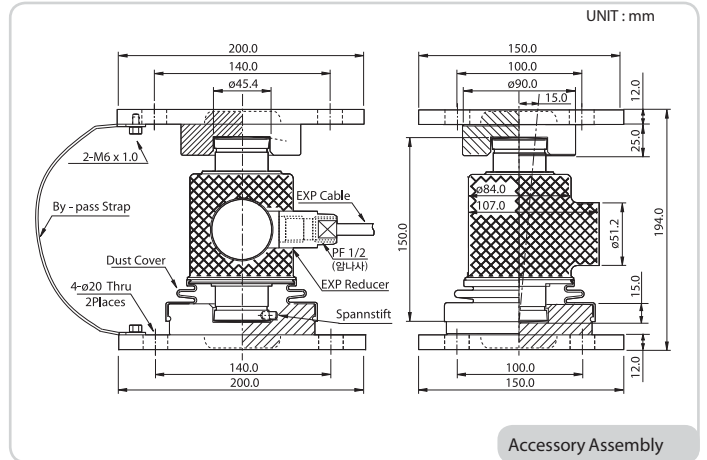
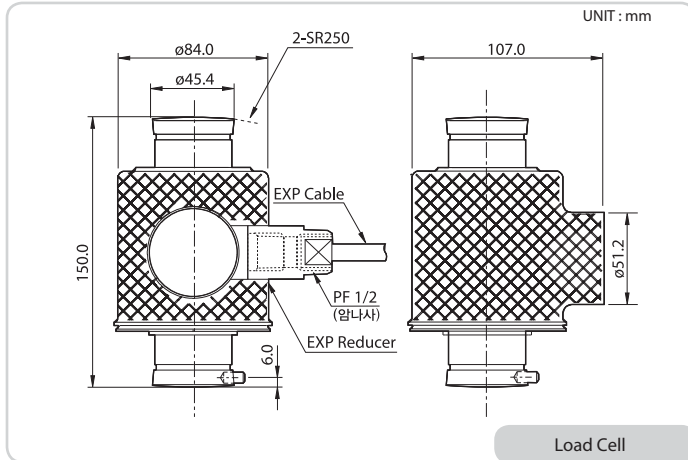
- Easy Load Cell replacement
- Appropriate for Tank and Truck application
- Loading, Mounting Bearing included
- Structurally Safe Design
- Anti Load cell rotation system
- Suitable for moisture environments
- Anti-lightening Strap constitution

● MANUAL

- Fix the Mounting plate on the surface
- Check the level of the Mounting Plate
- Join the Dust Cover with the Lower Bearing
- Place the Load Cell over the Lower Bearing
- Assemble the Loading Accessory Set with the Load Cell



● DIMENSION

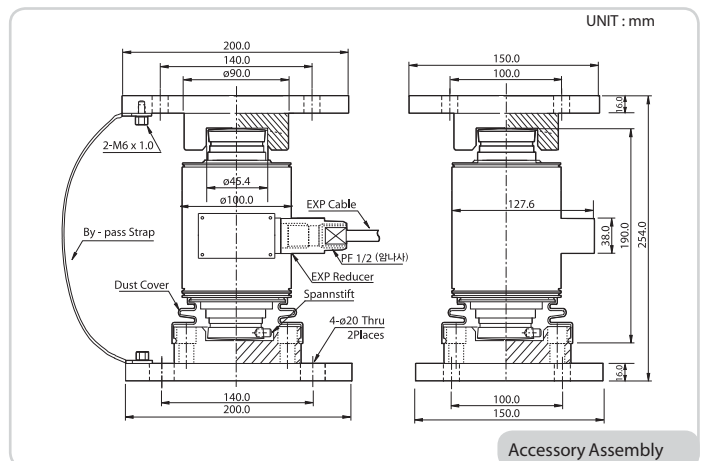
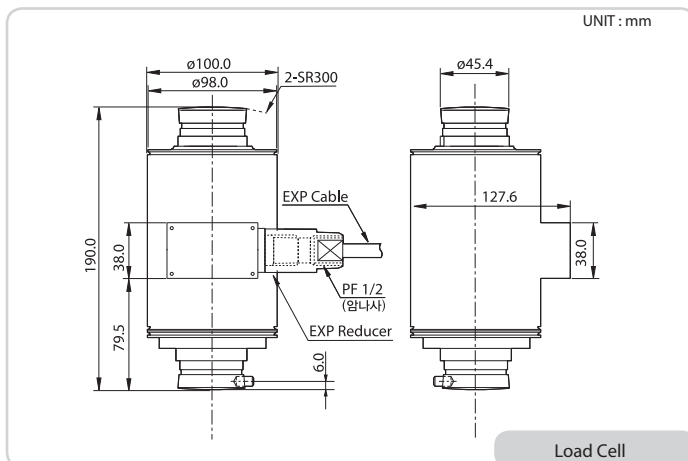


● ACCESSORY FEATURES

- Easy Load Cell replacement
- Appropriate for Tank and Truck application
- Loading, Mounting Bearing included
- Structurally Safe Design
- Anti Load cell rotation system
- Suitable for moisture environments
- Anti-lightening Strap constitution

● MANUAL

- Fix the Mounting plate on the surface
- Check the level of the Mounting Plate
- Join the Dust Cover with the Lower Bearing
- Place the Load Cell over the Lower Bearing
- Assemble the Loading Accessory Set with the Load Cell



● ACCESSORY FEATURES

- Easy Load Cell replacement
- Appropriate for Tank and Truck application
- Loading, Mounting Bearing included
- Structurally Safe Design
- Anti Load cell rotation system
- Suitable for moisture environments
- Anti-lightening Strap constitution

● MANUAL

- Fix the Mounting plate on the surface
- Check the level of the Mounting Plate
- Join the Dust Cover with the Lower Bearing
- Place the Load Cell over the Lower Bearing
- Assemble the Loading Accessory Set with the Load Cell